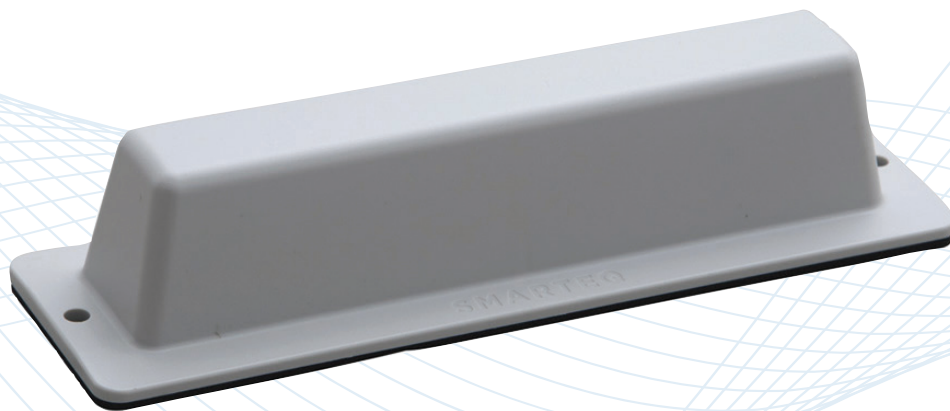


Smarteq™ LP4487 Low Profile ISM Antenna

ISM/LoRA/LPWAN Antennas - Low Profile Whipless

710498



Description

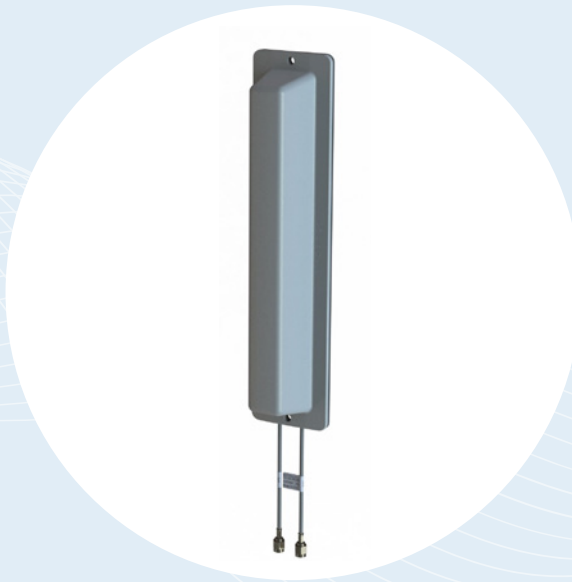
Low-profile, whipless combination antenna that delivers reliable RF performance.

Technologies

- ISM

Features

- Dual output 444 + 868 MHz ideal for Wireless M-Bus
- Low profile, ergonomic style with sophisticated engineering
- Excellent RF performance on metal and non-metallic surfaces



Smarteq™ LP4487 Low Profile ISM Antenna

ISM/LoRA/LPWAN Antennas - Low Profile Whipless

The Smarteq™ LP4487 antenna dual output 444 + 868 MHz offers excellent RF performance on metal or non-metallic surfaces in a discreet and durable design. The low profile housing gives a high degree of vandal resistance making it perfect for smart metering, vending machines and other M2M applications where reliable communications is required.

Features

- Dual output 444 + 868 MHz ideal for wM-Bus
- Low profile, ergonomic style with sophisticated engineering
- Excellent RF performance on metal and non-metallic surfaces
- Easy to install with two fixing screws
- DC-short
- Cable routing out from edge or hidden in through wall.

Applications

- Smart Metering
- Vending machines
- M2M

Certifications



SPECIFICATIONS

Smarteq™ LP4487 Low Profile ISM Antenna

ISM/LoRA/LPWAN Antennas - Low Profile Whipless

Electrical Specifications

All Models

Frequency Ranges	444 + 863-876 MHz		
Impedance	50Ω		
Polarization	Vertical		
VSWR		433 / 444MHz	868MHz
		< 2:1 / 1.5:1	< 2:1
Gain (Peak)	On metal	5 / 5dBi	5dBi
	Free space	1.5 / 2.5dBi	1.5dBi
Isolation	On metal	14dB	23dB
	Free space	12dB	21dB

Mechanical and Environmental Specifications (All Models)

Physical

Dimensions (LxWxH)	269 x 60 x 44mm	
Cable	863-872MHz	RG316, Grey 1.5 m
	444MHz	RG316, Black 1.5 m
Connector	MCX(m) <i>Other connectors available upon request</i>	
Weight	~225g including cable	
Material	Cover: ASA Seal: EPDM	
Color	Grey: RAL 7035	
Operating / Storage Temperature	-40°C to +85°C	
IP Class	IP44	
Certification	RoHS compliant	

CONTACT US

**For more information about
this product contact your
sales representative or visit
> pctel.com/antenna-products**

Solving Complex Wireless Challenges

PCTEL, an Amphenol company, is a leading global provider of wireless technology solutions, including purpose-built Industrial IoT devices, antenna systems, and test and measurement products. Trusted by our customers for decades, we solve complex wireless challenges to help organizations stay connected, transform, and grow.



PCTEL, Inc.

T: +1 630 372 6800 | pctel.com

Specifications subject to change without notice. PCTEL® and Smarteq™ are trademarks or registered trademarks of PCTEL, Inc. ©2025 PCTEL, Inc. All rights reserved. Rev. A (November 2025)